

TEAvisari Benchmarking System of Health Promotion Capacity Building on Local Level

Vesa Saaristo, Pia Hakamäki, Kirsi Wiss, Timo Ståhl
Nordisk Folkehelsekonferanse, Trondheim, 28.8.2014



NATIONAL INSTITUTE FOR HEALTH AND WELFARE, FINLAND



Background


- In Finland, municipalities (N=320) are responsible for a variety of health promoting activities in different fields of action
 - Health Care Act (1326/2010)
- Until the launch of a benchmarking tool called TEAviisari in March 2010, there was no nationwide comparable information
- Financed by
 - The Ministry of Social Affairs and Health
 - The Ministry of Education and Culture
 - National Board of Education
 - National Institute for Health and Welfare



TEAviisari

- Online database and user interface, free of charge
- Provides information for the planning, development and evaluation of health promotion activities
- Aims to make measures taken by local authorities visible and to provide information on actions that promote better public health on local level
- At the moment covers four sectors
 - Primary health care
 - Comprehensive schools and upper secondary education
 - Promotion of physical activity
 - Municipal management
 - Elderly care coming up in 2015(?)

Health promotion capacity building: a generic framework

1. Commitment of the organisation to the promotion of population health
 2. Management of health promotion
 3. Population health monitoring, needs assessment and evaluation
 4. Resources for health promotion
 5. Common working practices
 6. Public participation/partnership in the planning and evaluation of health promotion services
 7. Other core health promotion functions
- 

Biennial data collections

Sector	Time	n	Response rate	# of Indicators
Primary health care	Spring 2012	154	100%	232
Promotion of physical activity	Spring 2012	229	68%	104
Municipal management	Spring 2013	224	67%	64
Comprehensive schools	Autumn 2013	2022	74%	141
Upper secondary schools	Autumn 2012	343	86%	116
Vocational schools	Autumn 2012	146	92%	116
Elderly care	Autumn 2014			

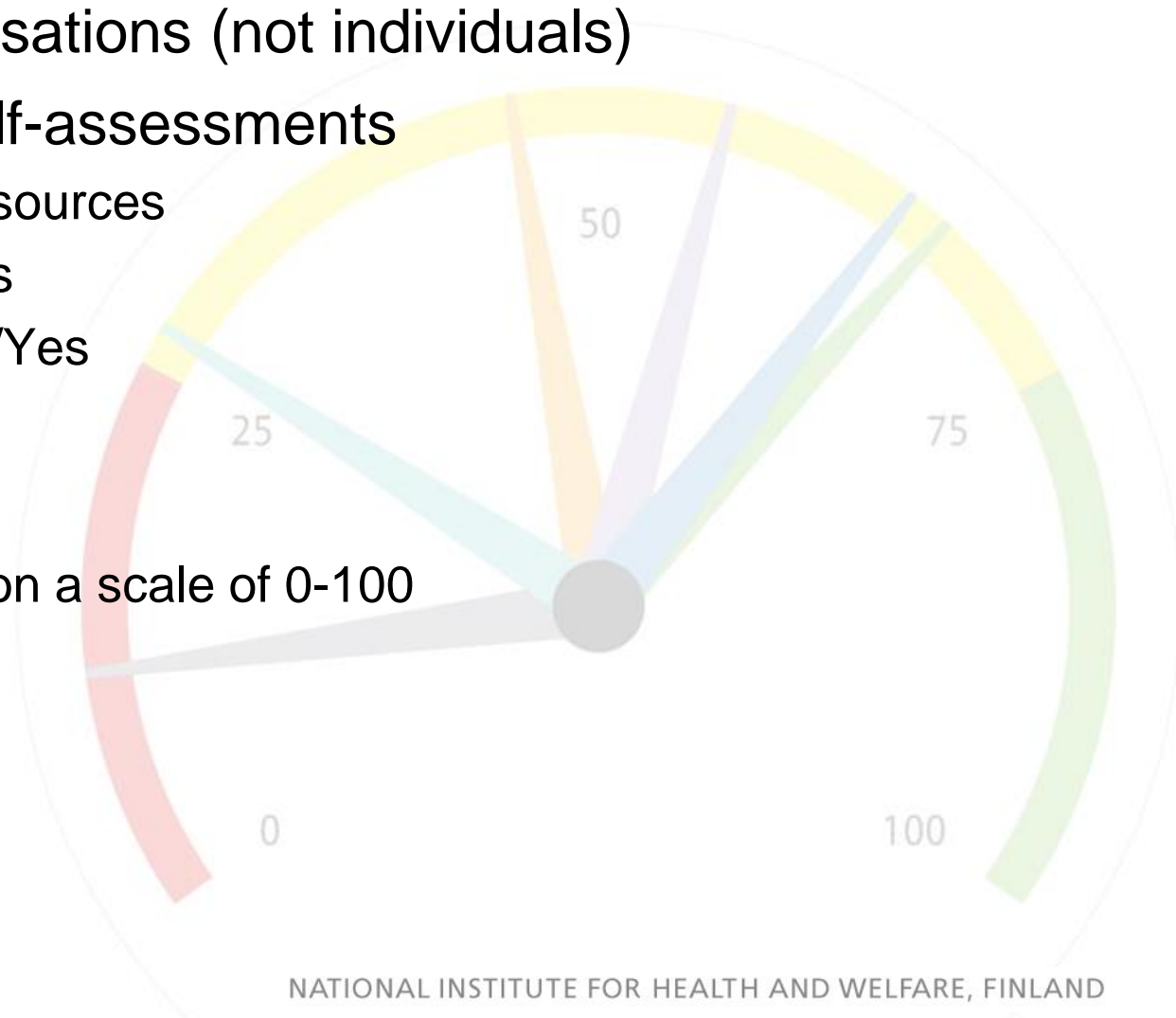
- Primary health care 2014 ($\approx 97\%$) and physical activity 2014 ($\approx 78\%$) will be published in December 2014

Datasets

- Supplemental data from national registers
 - Running costs from Statistics Finland
 - Sports facilities database LIPAS, University of Jyväskylä
 - Smokefree municipalities, Association of Local Authorities
 - ...
- School-level data published only with the permission of the school
 - 755 comprehensive schools
 - 163 upper secondary schools
 - 74 vocational schools

What kind of indicators?

- Depicting organisations (not individuals)
 - Factual – not self-assessments
 - Euros, human resources
 - Number of events
 - Dichotomous No/Yes
 - Comparable
 - Desirable quality
- ➔ Interpreted data on a scale of 0-100

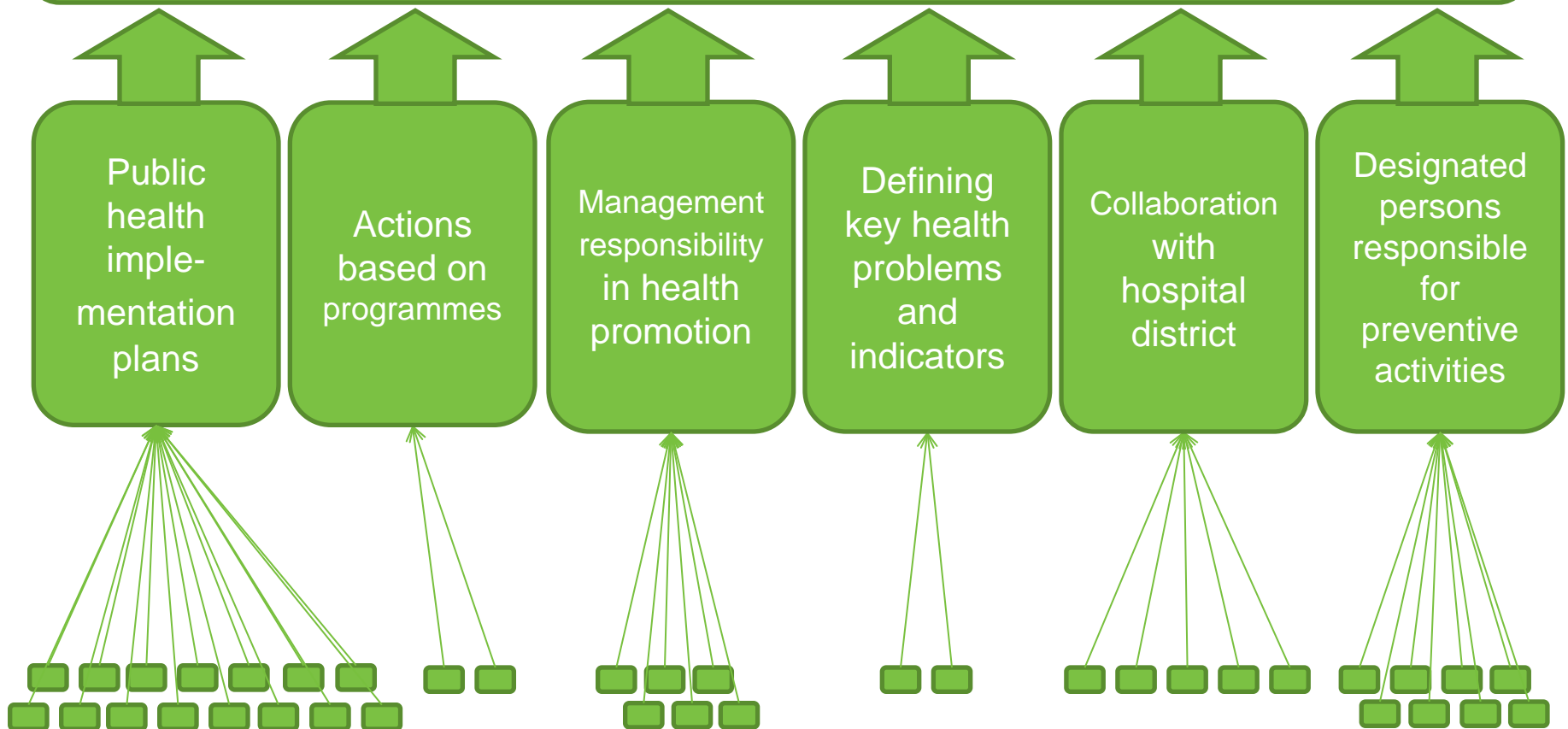


TEAvisari is being used in

- Decision-making on local and regional levels
 - Setting goals in operational and financial planning
 - Finding targets for development
 - Welfare reports
- National-level policy-making and guidance
 - Preparation of legislation
 - Evaluation of the implementation of the legislation
 - Follow-up of national programmes and guidance
 - Annual report of the government
 - Statistical Yearbook of Education
 - Decisions of the Chancellor of Justice



MANAGEMENT

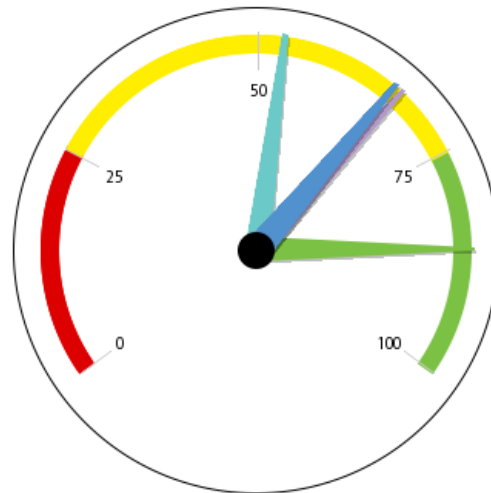


TEAvisari in practice

<http://www.thl.fi/en/web/thlfi-en/research-and-expertwork/tools/teaviisari>

Front page Tampere

På svenska In Finnish



Health Promotion Capacity Building

- Primary health care 2012
- Comprehensive schools 2013
- Physical activity 2012
- Municipal management 2013

Health Promotion Capacity Building	Score (0–100)	Whole Country
Primary health care 2012	66	60
Comprehensive schools 2013	67	65
Physical activity 2012	53	63
Municipal management 2013	86	72

**Thank you for
your attention!**

